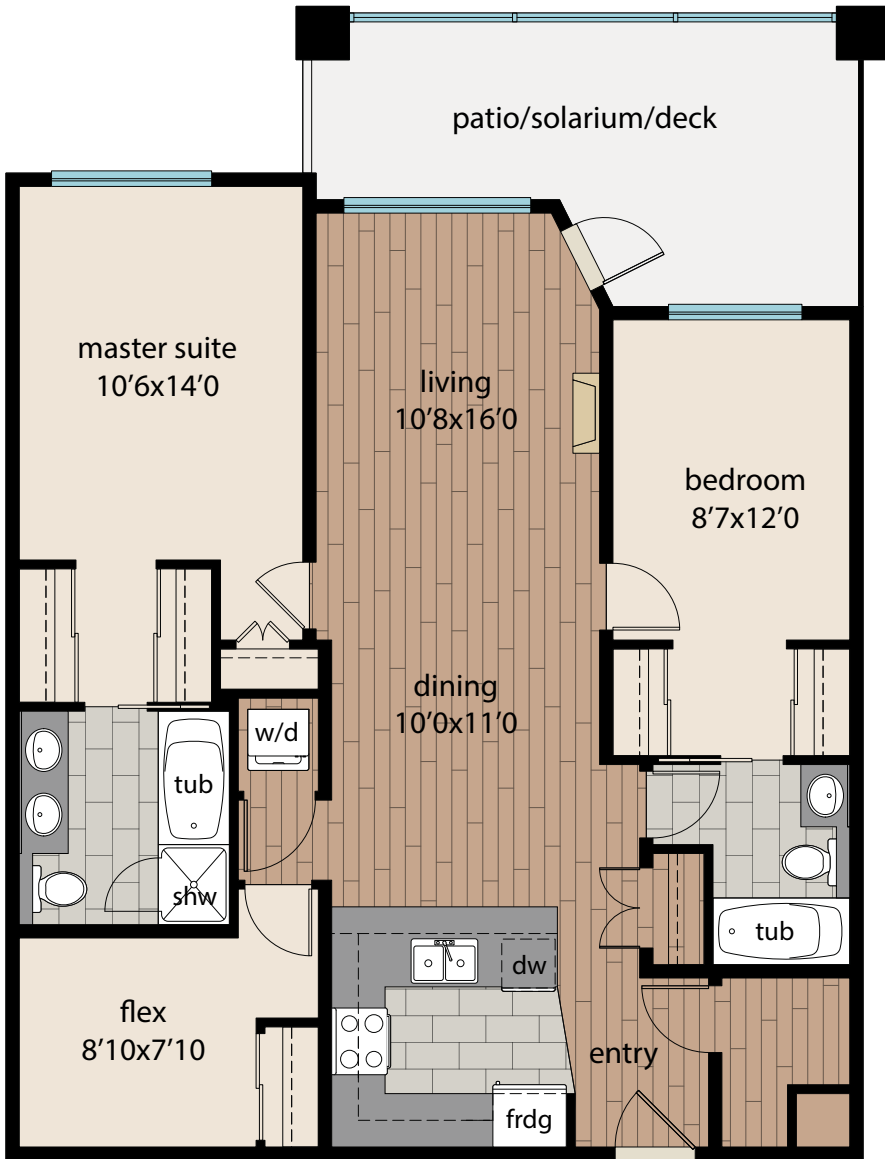


2 Bedroom & Flex Room Executive Suite

Style G
1,120 sq.ft.

Garden - \$319,900
Solarium - \$329,900



MEASUREMENTS

Suite sizes are expressed in standard architectural and real estate format. Sizes are expressed in square feet and are to the outside of the walls of the suite. Where a suite shares a double wall with another suite, the measurement is to the middle of that double wall. Suite sizes DO NOT include balconies, enclosed balconies, patios, parking area, or underground storage. ("Strata measurements" use a different standard of 'habitable area' and are expressed in square meters.) Room sizes are approximate and measure to the inside of the drywall. Suite sizes will vary slightly during construction but will be within ±3% of the stated architectural size.

Garden : Style G - \$319,900

Estimated Mortgage Payment with Standard 5% Down Payment

With 5% down, 3.09% 25 Year Mortgage

Deposit when you write the contract	\$ 0
Deposit 10 days later when making deal firm	\$ 5,000
Remainder of down payment 60 days later	\$ 11,827
Monthly Mortgage Payment after moving in	\$ 1,572

Reflects the new 25 year mortgage rules

Solarium : Style G - \$329,900

Estimated Mortgage Payment with Standard 5% Down Payment

With 5% down, 3.09% 25 Year Mortgage

Deposit when you write the contract	\$ 0
Deposit 10 days later when making deal firm	\$ 5,000
Remainder of down payment 60 days later	\$ 12,353
Monthly Mortgage Payment after moving in	\$ 1,621

Reflects the new 25 year mortgage rules

