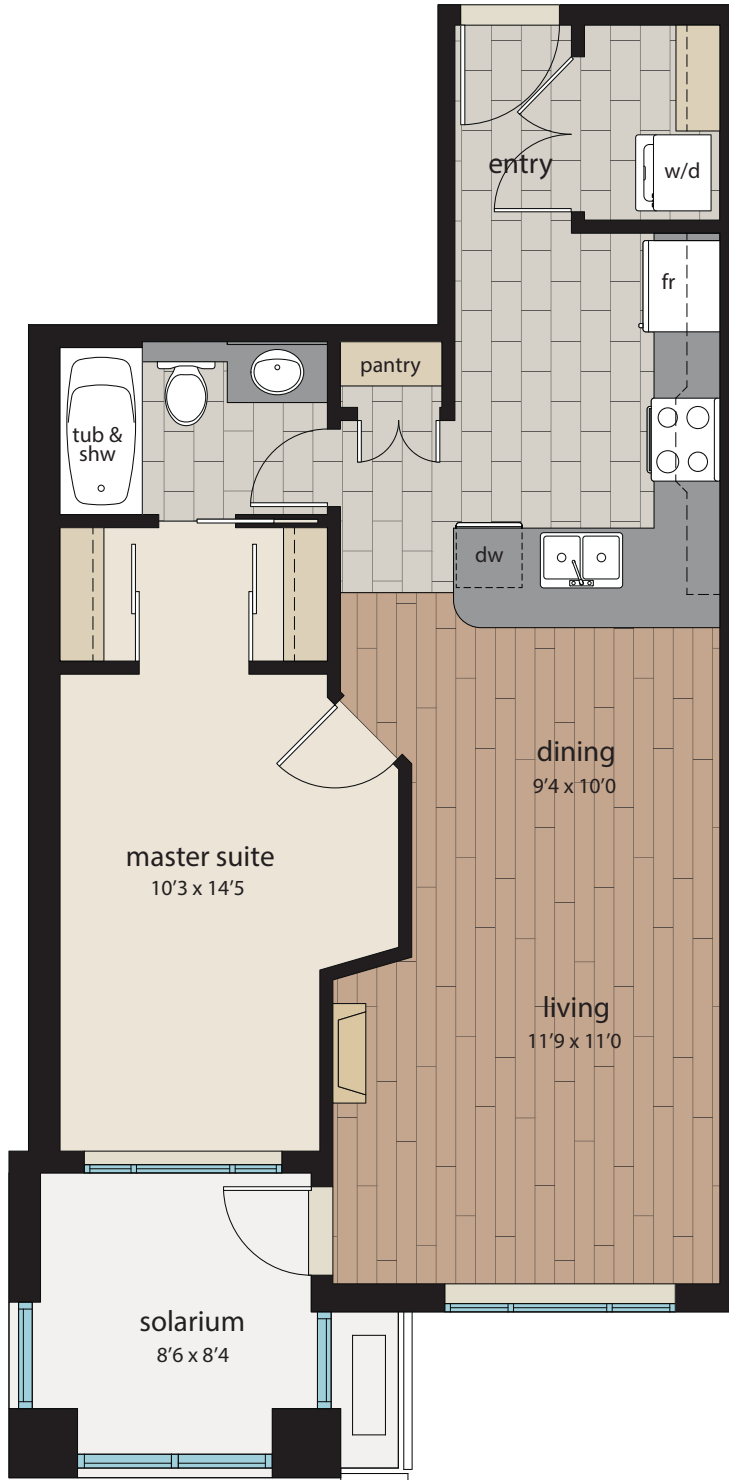


1 Master Bedroom

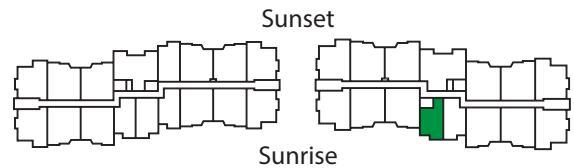
Includes 2 Parking Spots



Style C
684 sq.ft.

| Orientation | Floors 1-5 | Vaulted Top floor (6 th) |
|-------------|------------|--------------------------------------|
| Sunrise | \$229,900 | \$244,900 |

| Sunrise - Style C | | |
|--|----------------|----------------|
| Estimated Mortgage Payment with Standard 5% Down Payment | | |
| With 5% down, 3.04% 25 Year Mortgage | Floors 1-5 | Top floor |
| Price before taxes | \$229,900 | \$244,900 |
| Deposit when you write the contract | \$0 | \$0 |
| Deposit 10 days later when making deal firm | \$5,000 | \$5,000 |
| Remainder of down payment 60 days later | \$6,863 | \$7,637 |
| Monthly Mortgage Payment after moving in | \$1,102 | \$1,174 |



Parkside 1

As part of our on-going product development program, the Developer reserves the right to make modifications and/or changes to the specifications. Square footages and room sizes are based on Architectural drawings and actual measurements may vary. E. & O.E.

